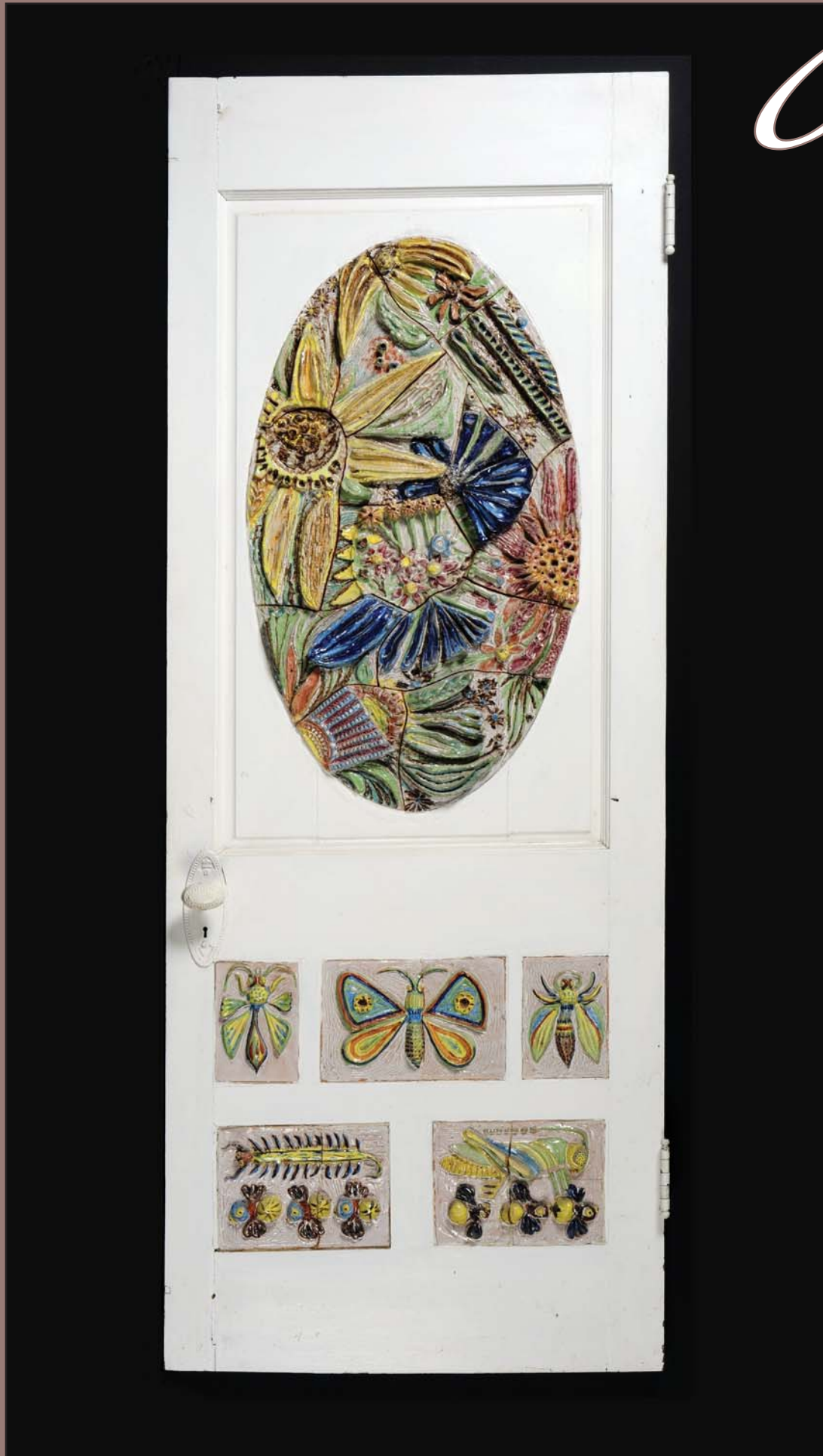


# At the MacKenzie

# For Emily



*Poetry in the Garden* : An Evening Inspired by Emily Dickinson with exhibition tour led by MacKenzie Head Curator, Timothy Long. Featuring: Anne Campbell, Judith Krause, Barbara Dana and Cindy MacKenzie. Friday, July 24 at 7 p.m.

Emily Dickinson would have loved Saskatchewan's warm summer nights! Join a curator-led tour of *For Emily* and finish the evening with a series of Dickinson-inspired poetry performances in the MacKenzie Art Gallery Sculpture Garden. Bring your own lawn chair or blanket.

*The Belle of Amherst* Performance. Saturday, August 1 at 8 p.m.

Actor/writer Barbara Dana will perform William Luce's *The Belle of Amherst* in the Shumiatcher Theatre at the MacKenzie Art Gallery. Reception to follow. This performance is part of the Emily Dickinson International Society's 2009 Annual Meeting taking place in Regina from July 31, 2009 to August 2, 2009. Tickets for the performance are \$15 (cash only), available at Bach and Beyond!

Image: Lorraine Malach (with Folmer Hansen and David Ross), *Studio Door*, 1968, wood, ceramic, glaze, brass on plywood, 153.2 x 59.5 x 7.0 cm  
Collection of the MacKenzie Art Gallery, gift of Donald and Claire Kramer

*For Emily* is co-curated by Timothy Long and Cindy MacKenzie. Organized by the MacKenzie Art Gallery with the support of the Canada Council for the Arts, the Saskatchewan Arts Board and the City of Regina Arts Commission.

3475 Albert Street, Regina, SK S4S 6X6 Ph: (306) 584-4250 E: mackenzie@uregina.ca www.mackenzieartgallery.ca

ART MATTERS

